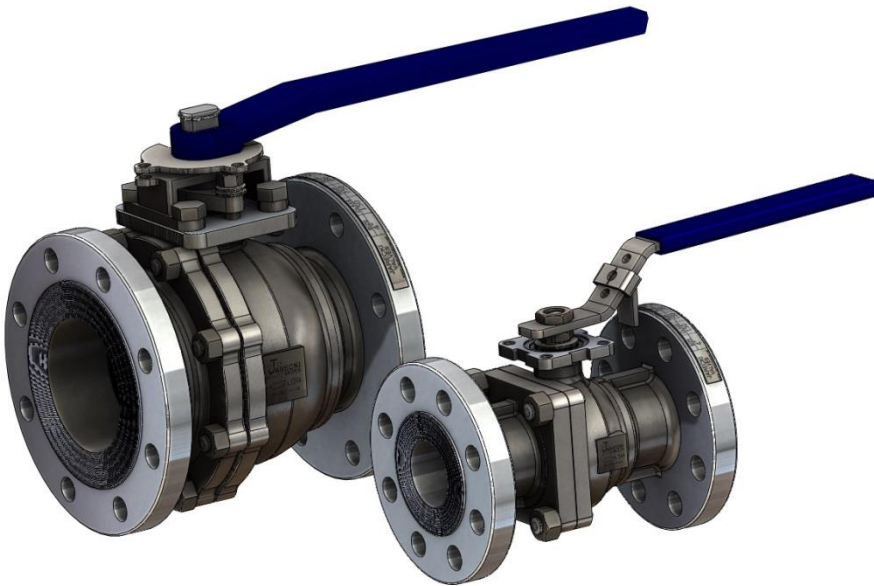




## VALVES DESIGNED SPECIFICALLY FOR PULP AND PAPER

### SV SERIES 2-PIECE BALL VALVES

Split Body metal seated ball valves for industrial and process applications.



The Jarecki SV Series ball valve is an economical choice for your high temperature and abrasive media valve needs. SV Series valves are used for applications in the Chemical, Power, Pulp and Paper, Petrochemical, Oil and Gas, and Mining Industries.

#### Standard Applications:

Green, Black, White Liquor  
Hot Oil  
Saturated Steam  
Feedwater  
Abrasive Media  
Chlorine  
Nitrogen  
TiCl<sub>4</sub>

#### Seat Leakage Class:

RTFE Seats Bubble Tight  
RTFE Seats API 598  
Metal Seats Class V - **Standard**  
Metal Seats Class VI  
Metal Seats Zero Leakage  
Metal Seats API 598  
Metal Seats ISO 5208

#### Design

##### Pressure Rating

- 150# Available in Sizes ½" to 12"
- 300# Available in Sizes ½" to 12"

##### Valve Size

- 1/2" to 12" Full Port
- 6" to 12" Reduced Port

##### End Connections

- Flanged
- Butt weld Available On Request

##### Valve Construction

- 2 Piece Valve Design
- Investment Cast Body Size ½" to 4"
- Split Body
- Floating Ball
- Spiral Wound Body Gasket with Secondary Metal to Metal Seal
- Actuator Mounting Pad
- Live Loaded Stem Packing
- Designed to B16.34
- Blow Out Proof Stem
- Heavy Duty Stem For High Torque

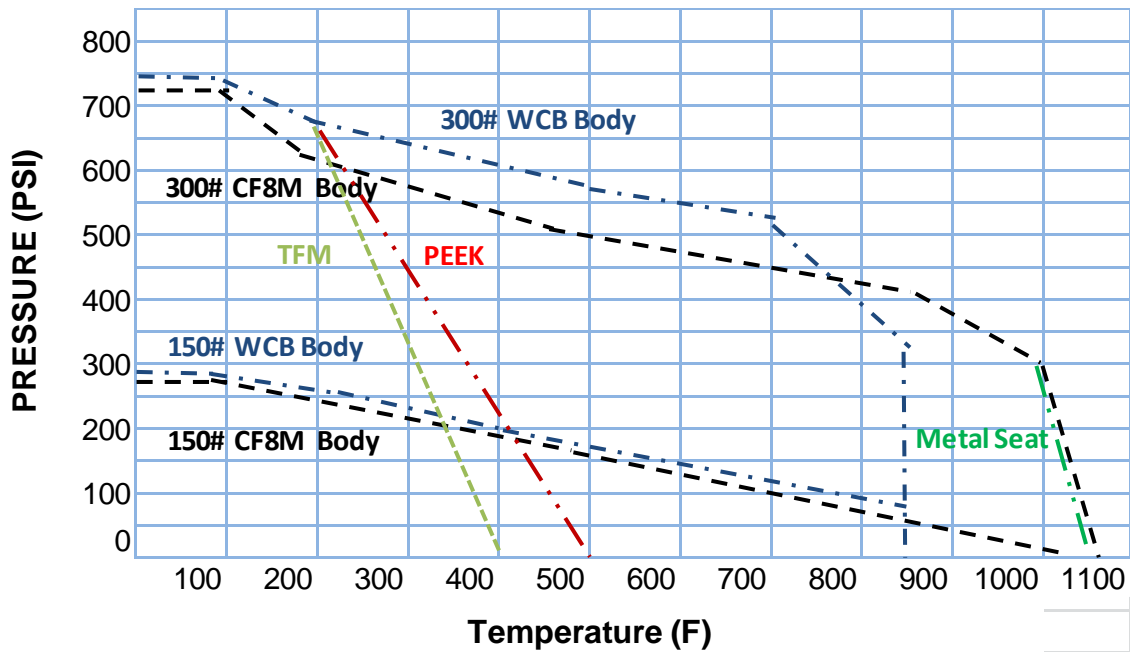
##### Seat Designs

- Bi-Direction RTFE Seats
- Bi-Direction Metal Seats
- Uni-Directional Metal Seats – **Standard**

##### Service Conditions

- Temperatures Up to 1000 deg F
- Pressures as low as Vacuum Service
- Pressures as High as 740 psi
- For Clean and Abrasive Services

## PRESSURE / TEMPERATURE CHART



### Live Loaded Packing System

- Blow-Out proof stem design to ensure workman safety.
- Live-Loaded stem packing to compensate for temperature fluctuations and normal wear.
- Care is taken not to over torque the stem packing at the testing facility.

### Reliable Body Seal

- The body and end connections are bolted with a metal to metal contact to ensure that proper compression on the body gasket is achieved.
- This metal to metal contact also guarantees that the dimensions inside the valve are correct. The torque is constant, and both the body and seat seal gaskets will always have the proper compression.

## Specifications


Valves covered in this bulletin are available to conform to the following industry standards and specifications

- Flanged Ends meet ANSI B16.10 and B16.5
- Butt Weld end connections meet MSS SP72
- Pressure Testing Of Valves MSS-SP-61
- Standard Marking for Valves MSS-SP-25
- Valves are tested per ANSI FCI 70-2-1976
- Minimum wall thickness meets ANSI B16.34
- Valves are tested per ANSI FCI 70-2-1991 and B16.34
- ASME B31.1 Power Piping
- ASME B31.3 Chemical Plant Piping
- MSS SP-55 Quality Standards For Castings
- MSS SP-6 Standard Finishes for Contact Faces of Pipe Flanges
- API 607 Fire Test For Soft Seated Valves
- NACE MRO175 Sulfide Stress Cracking Resistant Materials For oilfied Equipment\*
- API 6D Specifications for Pipeline Valves

\* Must specify this as a requirement at time of order



## LIQUOR SERVICE

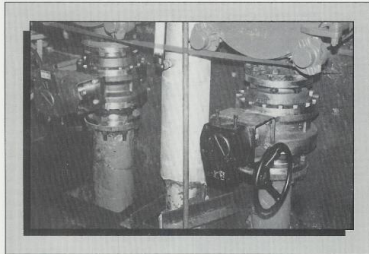


**“Phantom-Port” Ball Valve Solves Major Problems on Tough Liquor Lines**

*By Jack O'Brien  
Editor & Publisher*

**Mill Maintenance Case History**

Jarecki Industries, of Fairview, PA, has successfully developed a ball valve for green, white and black liquors. Valves installed August, 1987 at International Paper Co's Erie, Pa. mill, are still operating satisfactorily at 225 psi and 350 °F, with intermittent operation.



Power Plants Offer Additional applications - this photo shows installation of 6" Phantom Port valves at Consolidated Edison's Ravenswood Generating Station. These valves are being used as inlet isolation valves on tube oil coolers, which are actually salt water heat exchangers. The Phantom Port valves replaced gate valves in this service. Con Edison reports satisfactory performance since the beginning of 1986.

Ask any pipe shop maintenance supervisor what one of his biggest headaches is and he'll tell you "I get sick and tired of having to replace or recondition all my ball valves on my green, white and black liquor lines every year, and, as if that isn't bad enough, the corrosive liquors pit and scar the ball face, often damaging the seats so badly the valves no longer can be operated pneumatically and must be worked manually with cheater bars!"

Back in 1986 with the encouragement of the maintenance group at Hammermill's Erie mill, now International Paper, Jarecki Industries set out to prove a ball valve design that would withstand the constant corrosive action of black and green cooking liquor. Jarecki knew that the main sources of trouble in these applications were ball pitting and fluid deposits which occurred on the ball face. Ball pitting occurs when the valve is in closed position.

The ball face, which is exposed upstream to the corrosive attack of gases and fluids, tends to pit within the area of the ball bounded by the valve seat. This causes the critical smooth surface to become rough. Because the ball is fitted with zero clearance to the seats any roughness or protrusions caused by corrosive attack will damage the valve seats when the ball is cycled. Once the seats are damaged, effective sealing is lost. Continued cycling increases this seat damage. The second source of trouble, fluid deposits also occurs when the valve is in closed position. Valves that handle fluids and gases that tend to deposit crustations or leave residue on the inner valve surface will become hard to

Jarecki Valves has been making valves for Pulp and Paper since 1985. Our valve was designed with the help of the Hammermill Plant in Erie PA. They needed a valve for green liquor that would last. That is the beginning of the Phantom Port.

Since then we have supplied thousands of valves to the Pulp and Paper industry. It is not surprising. The Phantom Port feature allows for 8 times the normal life of a ball valve. Jarecki Valves typically last 10-20 years in green and black liquor services.

Pulp and Paper is one of the most demanding services on a ball valve. Don't put your trust in cheap import. You need a real valve for this application. You need an American Made, hand lapped metal seat, tough, reliable valve. That is what you get with Jarecki.





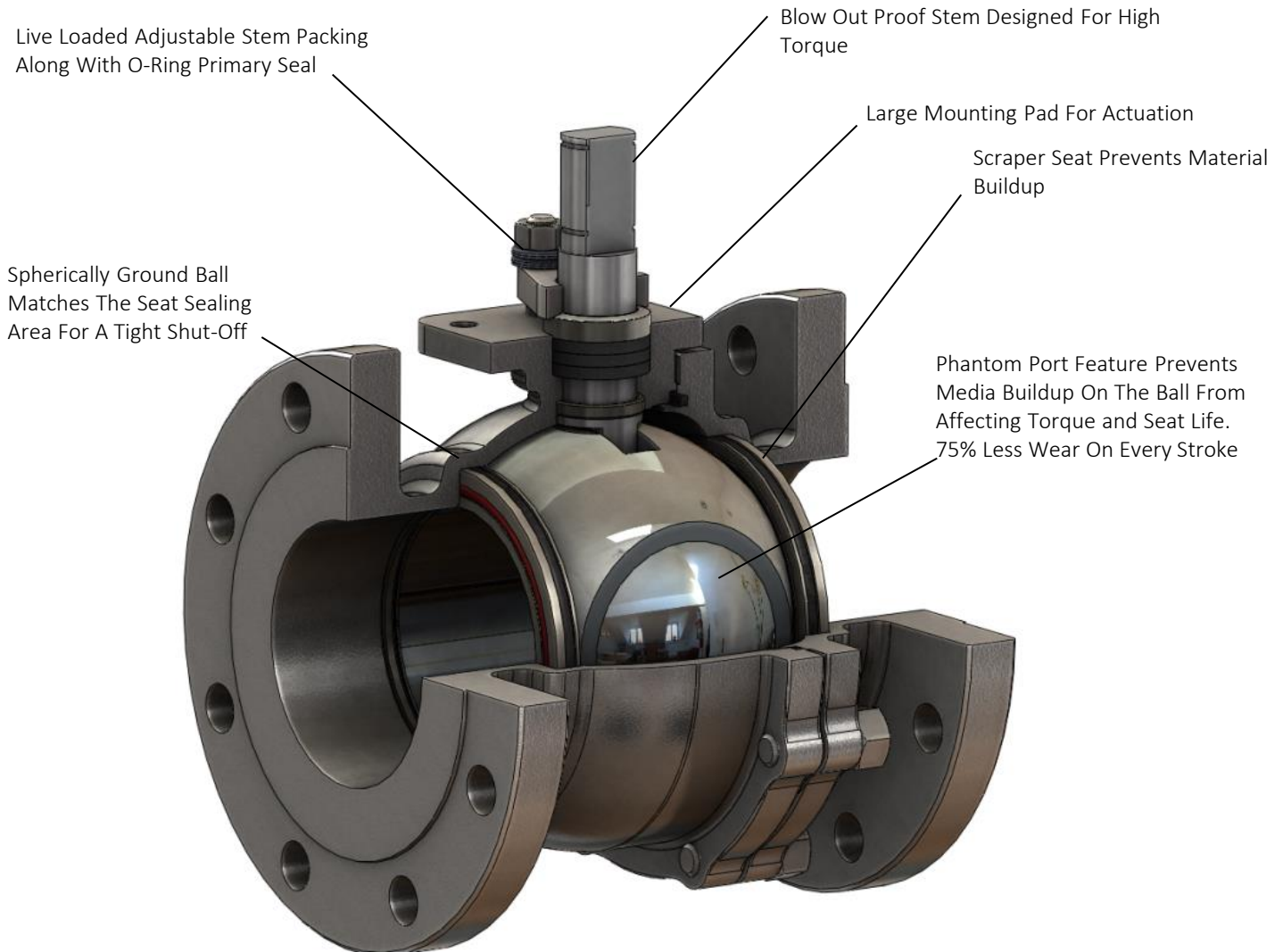
## FEATURES

### Reliable Shut-Off

- Tight shut-off is accomplished by grinding every ball to very tight tolerances and excellent finish, generating a true radius each individual seat to its mating ball, and then carefully lapping them together through our proven polishing process.
- Every valve that leaves the plant has both a hydrostatic, torque and cycle test, and seat leakage test performed on it.
- Standard Shut-Off is Class V. ISO 5208 Rate A,B,C and ANSI Class VI available As Options.

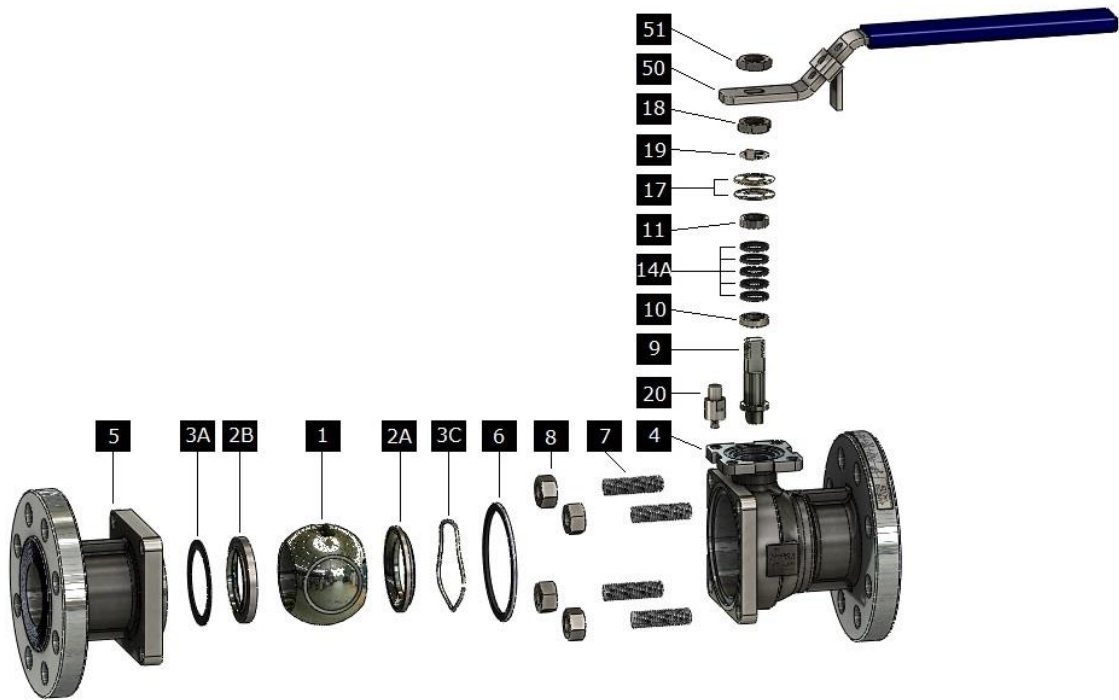
### Quality

- Jarecki Valves is an ISO 9000 Company and quality is an important part of our culture
- In Metal Seat Valves, .003 Thousands of an inch can make all the difference in torque, shut-off and overall valve performance. Our quality system requires this.
- At Jarecki Valves, 95% of our business is metal seated ball valves. The employees understand and excel at producing the highest quality metal seated valves available.





## BILL OF MATERIAL

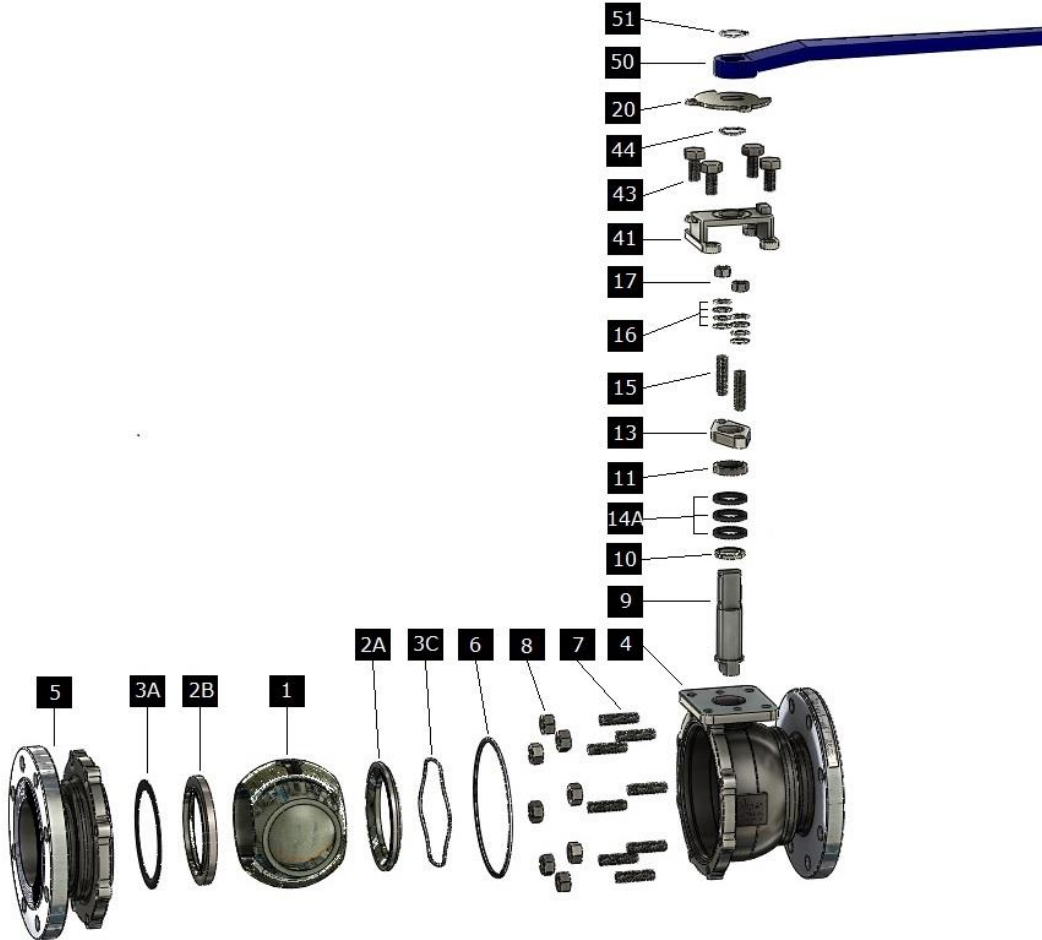


ITEM NO.	NAME	STAINLESS STEEL	CARBON STEEL	ALLOY 20	DUPLEX
1	BALL	316 W/ HARD CHROME*	316 W/ HARD CHROME*	ALLOY 20 W/ COLMONOY*	2205 W/ Tantalum Chrome Oxide *
2A	GUIDE SEAT (IF APPLICABLE)	316 W/ STELLITE HF*	316 W/ STELLITE HF*	ALLOY 20 W/ COLMONOY*	2205 W/ Tantalum Chrome Oxide *
2B	SEALING SEAT	316 W/ STELLITE HF*	316 W/ STELLITE HF*	ALLOY 20 W/ COLMONOY*	2205 W/ Tantalum Chrome Oxide *
3A	SEAT SEAL	TFE/Viton/Graphite	TFE/Viton/Graphite	TFE/Viton/Graphite	TFE/Viton/Graphite
3C	SEAT SPRING (IF APPLICABLE)	17-7 SST/ A286	17-7 SST/ A286	ALLOY 20	2205 DUPLEX SST
4	BODY	A351 CF8M	A216 WCB	A351 2 CN7M	A351 CD3MN
5	TAILPIECE	A351 CF8M	A216 WCB	A351 2 CN7M	A351 CD3MN
6	BODY GASKET	316sst w/ Graphite Filler*	316sst w/ Graphite Filler*	ALLOY 20 w/ Graphite Filler*	2205sst w/ Graphite Filler*
7	BODY STUD	ASTM A193 B8	ASTM A193 B8	ASTM A193 B8	ASTM A193 B8
8	BODY NUT	ATM A194 Gr. 8	ATM A194 Gr. 8	ATM A194 Gr. 8	ATM A194 Gr. 8
9	STEM	17-4SST/XM-19*	17-4SST/XM-19*	ALLOY 20*	2205 DUPLEX SST*
10	THRUST WASHER	Nitronic 60/TFE*	Nitronic 60/TFE*	STELLITE*	STELLITE*
11	COMPRESSION RING	316 SST	316 SST	ALLOY 20	2205 DUPLEX SST
14A	STEM PACKING	TFE/GRAPHITE	TFE/GRAPHITE	TFE/GRAPHITE	TFE/GRAPHITE
16	GLAND NUT	ATM A194 Gr. 8	ATM A194 Gr. 8	ATM A194 Gr. 8	ATM A194 Gr. 8
17	BELLEVILLE WASHER	301 SST	301 SST	301 SST	301 SST
18	PACKING NUT	304 SST	304 SST	304 SST	304 SST
19	PACKING NUT LOCK	304 SST	304 SST	304 SST	304 SST
50	LEVER W/ LOCKING DEVICE	304 SST	304 SST	304 SST	304 SST
51	NUT	304 SST	304 SST	304 SST	304 SST

\* Other materials and coatings available upon request



## BILL OF MATERIAL

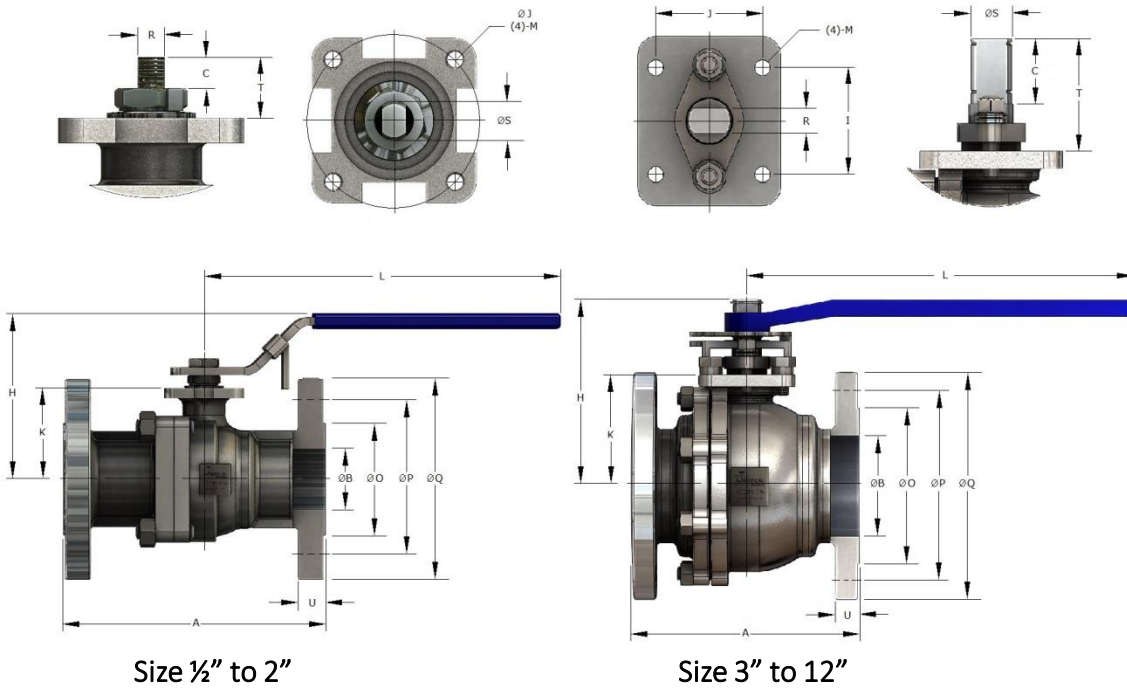


ITEM NO.	NAME	STAINLESS STEEL	CARBON STEEL	ALLOY 20	DUPLEX
1	BALL	316 W/ HARD CHROME*	316 W/ HARD CHROME*	ALLOY 20 W/ COLMONOY*	2205 W/ Tantalum Chrome Oxide *
2A	GUIDE SEAT (IF APPLICABLE)	316 W/ STELLITE HF*	316 W/ STELLITE HF*	ALLOY 20 W/ COLMONOY*	2205 W/ Tantalum Chrome Oxide *
2B	SEALING SEAT	316 W/ STELLITE HF*	316 W/ STELLITE HF*	ALLOY 20 W/ COLMONOY*	2205 W/ Tantalum Chrome Oxide *
3A	SEAT SEAL	TFE/Viton/Graphite	TFE/Viton/Graphite	TFE/Viton/Graphite	TFE/Viton/Graphite
3C	SEAT SPRING (IF APPLICABLE)	17-7 SST/ A286	17-7 SST/ A286	ALLOY 20	2205 DUPLEX SST
4	BODY	A351 CF8M	A216 WCB	A182 CN7M	A351 CD3MN
5	TAILPIECE	A351 CF8M	A216 WCB	A182 CN7M	A351 CD3MN
6	BODY GASKET	316sst w/ Graphite Filler*	316sst w/ Graphite Filler*	ALLOY 20 w/ Graphite Filler*	2205sst w/ Graphite Filler*
7	BODY STUD	ASTM A193 B8	ASTM A193 B8	ASTM A193 B8	ASTM A193 B8
8	BODY NUT	ATM A194 Gr. 8	ATM A194 Gr. 8	ATM A194 Gr. 8	ATM A194 Gr. 8
9	STEM	17-4SST/XM-19*	17-4SST/XM-19*	2205 DUPLEX SST*	2205 DUPLEX SST*
10	THRUST WASHER	Nitronic 60/TFE	Nitronic 60/TFE	STELLITE	STELLITE
11	COMPRESSION RING	316 SST	316 SST	ALLOY 20*	2205 DUPLEX SST*
13	COMPRESSION PLATE	304 SST	304 SST	304 SST	304 SST
14a	STEM PACKING	TFE/GRAPHITE	TFE/GRAPHITE	TFE/GRAPHITE	TFE/GRAPHITE
15	GLAND STUD	ASTM A193 B8	ASTM A193 B8	ASTM A193 B8	ASTM A193 B8
16	BELLEVILLE WASHER	301 SST	301 SST	301 SST	301 SST
17	GLAND NUT	ATM A194 Gr. 8	ATM A194 Gr. 8	ATM A194 Gr. 8	ATM A194 Gr. 8
20	TRAVEL STOP	304 SST	304 SST	304 SST	304 SST
41	STOP HOUSING	304 SST	304 SST	304 SST	304 SST
43	BOLTS	304 SST	304 SST	304 SST	304 SST
44	SNAP RING	301 SST	301 SST	301 SST	301 SST
50	LEVER	DUCTILE IRON	DUCTILE IRON	DUCTILE IRON	DUCTILE IRON
51	SNAP RING	301 SST	301 SST	301 SST	301 SST

\* Other materials and coatings available upon request



## DIMENSIONS



### ANSI 150# FULL PORT

SIZE	1/2	3/4	1	1 1/4	1 1/2	2	2 1/2	3	4	5	6	8	10	12
A	4.25	4.61	5.00	5.50	6.50	7.00	7.85	8.00	9.00	14.00	15.50	18.00	21.00	24.00
ØB	0.58	0.78	1.00	1.25	1.50	2.00	2.55	3.00	4.00	5.00	5.99	7.90	9.85	11.82
ØO	1.38	1.69	2.00	2.50	2.88	3.62	4.12	5.00	6.19	7.31	8.50	10.62	12.75	15.00
ØP	2.38	2.75	3.12	3.50	3.88	4.75	5.50	6.00	7.50	8.50	9.50	11.75	14.25	17.00
ØQ	3.50	3.88	4.25	4.62	5.00	6.00	7.00	7.50	9.00	10.00	11.00	13.50	16.00	19.00
Cv	20	45	80	150	260	410	650	1000	1730	3650	5250	10075	15250	21500
WEIGHT	5	6	8	11	15	25	39	43	69	110	182	305	555	672

### ANSI 300# FULL PORT

SIZE	1/2	3/4	1	1 1/4	1 1/2	2	2 1/2	3	4	5	6	8	10	12
A	5.50	6.00	6.50	7.00	7.50	8.50	9.50	11.12	12.00	15.00	15.88	19.75	22.40	25.50
ØB	0.58	0.78	1.00	1.25	1.50	1.98	2.55	2.99	3.99	5.00	5.98	7.88	9.85	11.82
ØO	1.38	1.69	2.00	2.50	2.88	6.32	4.12	5.00	6.19	7.31	8.50	10.62	12.75	15.00
ØP	2.62	3.25	3.50	3.88	4.50	5.00	5.88	6.62	7.88	9.25	10.62	13.00	15.25	17.75
ØQ	3.75	4.62	4.88	5.25	6.12	6.50	7.50	8.25	10.00	11.00	12.50	15.00	17.50	20.50
Cv	15	40	75	140	255	405	645	990	1715	3500	5000	10000	15000	21000
WEIGHT	6	8	11	14	23	28	47	74	106	160	255	395	715	875

### ANSI 150# REDUCED PORT

SIZE	6	8	10	12
A	10.50	11.50	13.00	14.00
ØB	5.98	7.88	9.85	11.82
ØR	8.50	10.62	12.75	15.00
ØS	10.62	13.00	15.25	17.75
ØF	12.50	15.00	17.50	20.50
Cv	1795	4835	10398	17852
WEIGHT	85	199	335	530

### MOUNTING DIMENSIONS

SIZE	1/2 - 3/4"	1"	1 1/2" - 2"	2 1/2" - 4"	6"	8"	10 - 12"
ØJ	1.650	1.970	2.760	4.020	NA	NA	NA
J	NA	NA	NA	NA	3.370	3.370	4.530
I	NA	NA	NA	NA	3.370	3.370	4.530
C	0.320	0.430	0.550	1.750	1.610	1.610	2.130
T	0.550	0.750	0.910	3.070	3.580	3.580	3.860
ØS	0.366	0.429	0.618	1.102	1.713	1.713	1.969
R	0.250	0.315	0.374	0.669	1.024	1.024	1.378
M	#10-24	1/4 - 20	5/16 - 18	1/2 - 13	1/2 - 13	1/2 - 13	5/8" - 11
ISO	F04	F05	F07	F10	F12	F12	F16



## OTHER PRODUCTS



### HSV SERIES BALL VALVE

- Our heavy pattern ball valve for the toughest applications
- Can take extremely high torque
- Designed for Blowdown Service
- Excellent in green liquor. It will be the only valve you every buy.



### Sand Separator Valve

- Reliable operation and long lasting
- Unique body cavity design does not allow any entrapment in the valve cavity. Keeping it clean.
- Tight Stem To Ball Contact Provides A Valve With Very Low Hysteresis
- Trunnion Design for high cycle operation

## ORDERING INFORMATION

6	SV	F	1	S	A	C	A	-	01	B
SIZE	SERIES	PORT SIZE	SEAT	SEAT MATERIAL	BALL	BALL COATING	BODY	CLASS	END CONNECTION	
1/2"	SV	F FULL	0 NONMETAL	A AlCrN	A 316SST	A AlCrN	A CF8M	01 150#	B FLANGED	
TO		R REDUCED	1 O SEAT	B Boronizing	F Hastelloy	B Boronizing	B WCB	03 300#	D BUTTWELD	
12"			2 G SEAL	C COLMONOY	G Incoloy	C CHROME	H Alloy 20			
			4 P SEAT	G Graphite	H Alloy 20	E ENP	X 2205 SST			
			3 G SEAL	M Tantalum	I Monel	I Ceramic				
			w/ OD O-RING	Chrome Oxide	X 2205 SST	M Tantalum				
			5 P SEAT	N HARD CARBON		Chrome Oxide				
			> 750 F	P PEEK		N HARD CARBON				
			6 G SEAL	Q CERAMIC		L Colmonoy				
			<1300 deg F	R CHROME CARBIDE		Q CERAMIC				
			Uni-Directional	S STELLITE		R CHROME CARBIDE				
			7 G SEAL	T TFE		S STELLITE				
			Uni-Directional	U UHMWPE		T TFE				
			9 P Seat	W TUNGSTEN CARBIDE		U Micro Tuff™				
			OD O-Ring			w TUNGSTEN CARBIDE				
						O no coating				

Example: 4" SV Series, Full Port, O-Ring Seat Seals, Stellite Seats, 316ss Ball with Hard Chrome Plating, CF8M body, 150# Flanged RF

4 - SV F 1 S A C A - 01 B



6910 West Ridge Road  
 Fairview, PA 16415  
 814.474.2666 Fax: 814.474.3645  
 www.JareckiValves.net  
 Email: Sales@JareckiValves.net

THIS BROCHURE IS GENERAL IN NATURE  
 AND MANUFACTURER RESERVES THE  
 RIGHT TO ALTER MATERIALS OR TO  
 MAKE DESIGN IMPROVEMENTS